

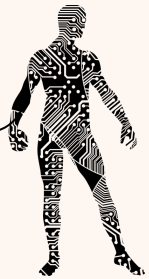
App / device

What data are users sharing?



After reviewing this app/device what is unclear about the data collected or its use? What questions or concerns do you have?

MAPPING OUR
DIGITAL *bodies*



Select an app or device from the *Privacy Not Included links and evaluate how personal data is collected, shared, & interpreted.

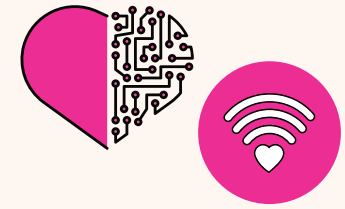
What data is collected about users?



Where does this data go? i.e. social networks, "third parties", etc.

How is the app / device / service using this data?

Consentful Tech



*f*REELY GIVEN

Does the tech mislead people into doing something they normally wouldn't do?

*r*EVERSIBLE

Do people have the right to limit access or entirely remove their data at any time?

*i*NFORMED

Does the tech use clear, accessible language to inform people about risks and the data they are storing?

*e*NTHUSIASTIC

Are people giving up their data in order to access necessary services, not because they want to?

*s*PECIFIC

Does the tech only use data the person has directly given, not data acquired through other means, and use it only in ways someone has consented to?